

FINITURE LACCATI

Lacquered finishes
Lackausführungen
Finitions laques
Acabados lacados

O . . . Laccato opaco
Mat lacquered
Matt lackiert
Laqué mat
Lacado mate

L . . . Laccato lucido
Glossy lacquered
Glänzend lackiert
Laqué brillant
Lacado brillante



LCO • LLC = Maggiorazione prezzo + 20%
Price increase + 20%
Aufpreis + 20%
Augmentation sur le prix + 20%
Recargo + 20%

Melaminici
Melamine finishes
Melaminausführung
Melaminés
Acabados melamina

Finitura Materica

Wooden finishes • Holzimitation • Finition bois • Acabado efecto madera



027 • Rovere Nodi chiaro



028 • Rovere Nodi scuro



015 • Malta Ghiaccio



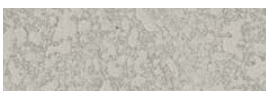
016 • Malta Tortona

FINITURE

Finishes
Ausführung
Finition
Acabado

Laccati Effetto Resina

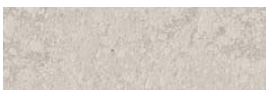
Lacquered resin effect • Lack Betoneffekt • Laques effet résine • Laca efecto resina



H716 • Light grey



H726 • Dark grey



H63 • Tortora



H74 • Terracotta

Laccati micalizzati

Lacquered mica • Lack Glimmereffekt • Laques micalisés • Laca efecto mica



OTIT • Titanio



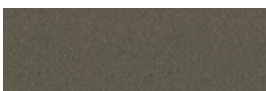
OPMB • Piombo



ONIK • Nichel

Laccati metallici

Lacquer metal finish • Lack Metalleffekt • Laqués métalliques • Laca efecto metálico



UTIT • Titanio



UNIK • Nichel



UPMB • Piombo



UOTN • Ossido ottone



UBRN • Ossido bronzo

Impiallacciati

Veneered • Furniert • Plaqué bois • Enchapado



ER5 • Rovere Nodi



ER6 • Rovere Termotrattato



ET4 • Rovere Gesso



ET5 • Rovere Visone



ET3 • Rovere Cenere



ET2 • Rovere Castoro